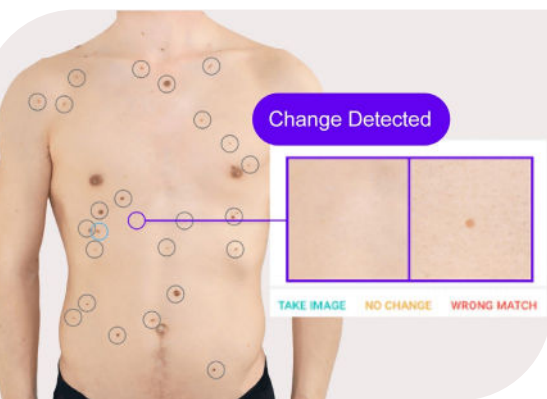


# Precision Skin Cancer Surveillance

Precision Skin Cancer Surveillance (PSCS) is an advanced imaging service designed to support the early detection and meticulous monitoring of melanoma, an aggressive form of skin cancer. Administered by a specially trained professional, this service captures high-resolution images of your skin's surface, establishing a baseline for subsequent comparisons.



Our PSCS program integrates advanced AI technology to review images scan after scan, effectively highlighting areas of concern that warrant closer examination. It serves as a support tool to traditional dermatological evaluations, and includes detailed oversight. A comprehensive report from a skin expert is generated for your Care Team, ensuring any changes in the skin are assessed with the utmost precision.

By supplementing the expertise of Harrison's healthcare team with detailed visual data and AI-enhanced analysis, PSCS offers a more robust approach to skin health management, enhancing the potential for early intervention and personalized care strategies.

## Key Benefits

- **Early detection:** Identify new moles or changes in existing moles
- **Monitoring over time:** Establishes a visual record for precise tracking of skin changes over time
- **Comprehensive coverage:** Provides a full-body visual map
- **Improved accuracy:** Detailed images highlight subtleties not easily seen during a standard physical exam
- **Peace of mind:** Reassurance to clients through systematic documentation

## High-Risk Clients Who May Benefit

- Individuals with a personal or family history of melanoma
- Patients with multiple or atypical moles (dysplastic nevi)
- Those with fair skin, light hair, and eye color: Higher susceptibility to damage from UV radiation
- Patients with a history of sunburns or extensive UV exposure: Particularly multiple blistering sunburns or a history of tanning bed use
- Individuals with a compromised immune system

*Precision Skin Cancer Surveillance is a supplement for your Care Team, designed to enhance the effectiveness of skin cancer screenings and dermatological care.*

Connect with your  
Family Physician or  
Nurse Practitioner  
who will send an  
internal referral for  
this service

Price: \$795  
+ tax